

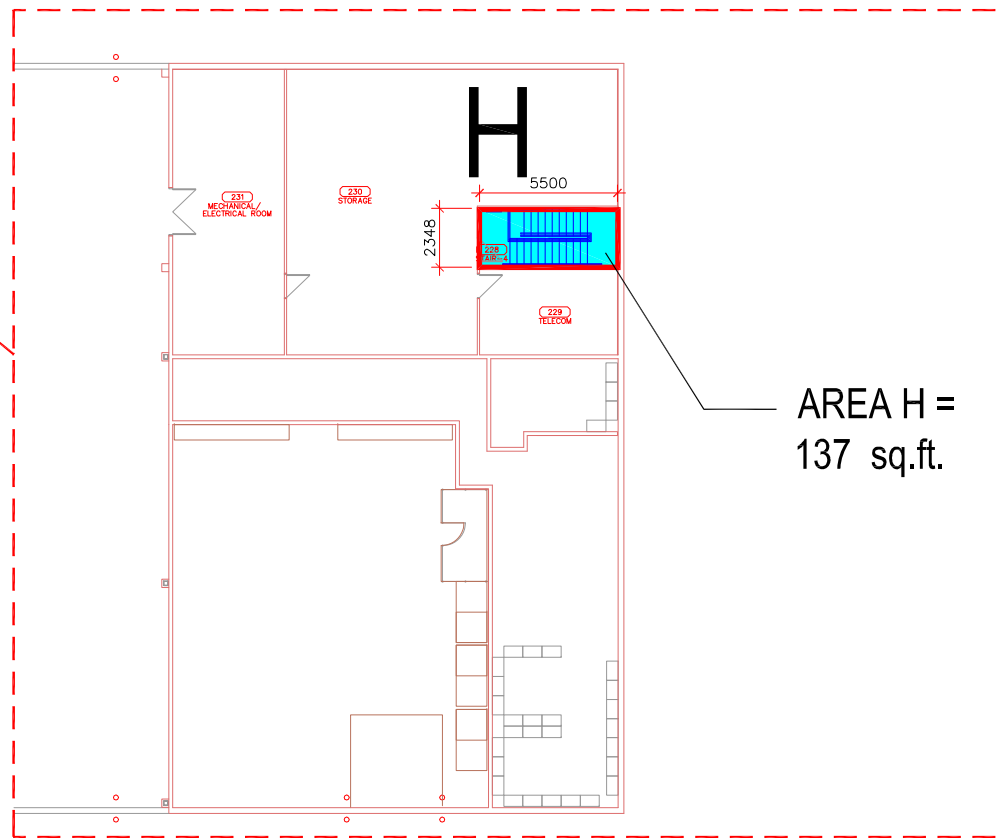
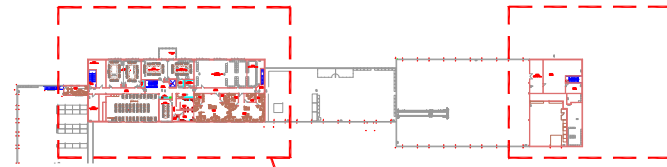


**KEY PLAN**

NOT TO SCALE - FOR REFERENCE ONLY

2ND FLR. / MEZZ.  
960 Thomas  
City of Winnipeg  
East Yard Complex

**AREAS OF WORK**



AREA H =  
137 sq.ft.

PARTIAL SECOND FLOOR PLAN -960 THOMAS AVENUE, EAST YARDS COMPLEX  
NOT TO SCALE - FOR REFERENCE ONLY

ALL YEARS : SUMMER AND WINTER: ONE SHIFT / DAY- YEAR ROUND

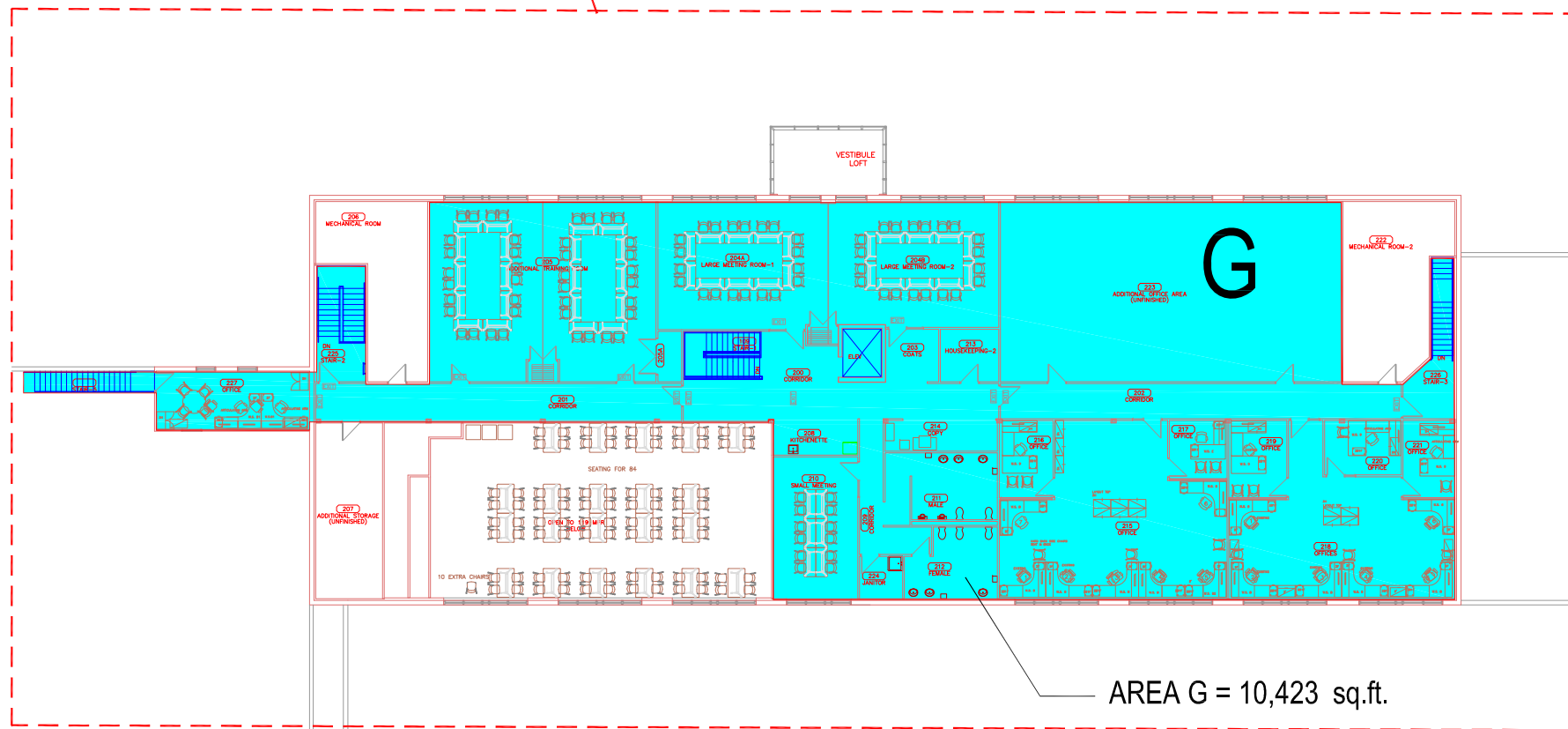
TOTAL AREA = 10,560 sq.ft.

AREA G =  
10,423 sq.ft.

AREA H =  
137 sq.ft.

MEZZANINE /  
SECOND . FLR.

2ND FLR.



AREA G = 10,423 sq.ft.

PARTIAL SECOND FLOOR & MEZZ. FLOOR PLAN -960 THOMAS AVENUE, EAST YARDS COMPLEX  
NOT TO SCALE - FOR REFERENCE ONLY

No.	REVISION/DESCRIPTION	BY	DATE
SEAL			

DRAWN	TC	CHECKED	CAD	DESIGNED	CAD	APPROVED	CAD
DATE	2016.03.29	USER	APPROVAL				

THE CITY OF WINNIPEG  
PLANNING, PROPERTY AND  
DEVELOPMENT DEPARTMENT  
MUNICIPAL ACCOMMODATIONS DIVISION  
3-65 GARRY STREET, R3C 4K4

PROJECT  
CITY OF WINNIPEG  
EAST YARD COMPLEX  
MAIN AND SECOND FLOORS  
960 THOMAS AVE.

SHEET TITLE  
AREAS TO CLEAN:  
SECOND FLOOR &  
MEZZANINE  
**0960TM02**

SCALE	PROJECT No:	SHEET No:
AS SHOWN	190-2016	A2